



EAZY ERP Technologies Pvt. Ltd.

Case Study for the Project of EAZY ERP- Chelsea Mills

Particulars	EBS
Prepared By	Mr. D.B.Singh (Project Manager)
Date of Preparation	07th April, 2015
sApproved By	Mr.Kunal Singhal (Managing Director)
Date of Approval	10th April, 2015

Control Reference No.: EBS/CS/ 001



INDEX

1	Chelsea Mills – Client Profile	2
	Products	2
	Production Process	3
	Customer Success Story	7
2	Challenge before Eazy ERP Implementation	7
	Pain areas	8
3	Solution	9
	Modules	9
4	Result	10
	Pain Area Resolved by Eazy ERP	10
	Generate Reports from Eazy & Tally Software	12
5	Reports	12



1. Chelsea Mills – Client Profile

Chelsea Mills (CHM) established in 1978 and CHM is one of the leading garment export companies in India. Client has a state-of-the-art production facility located at Haryana where all manufacturing and finishing operations are carried out. On time delivery service and quality of the products are the main reasons for impressive client base. The products are manufactured using latest techniques with zero percent compromise on quality. Client has a state-of-the-art cutting unit and computerized embroidery units with latest technologies. Client has developed eco-friendly laundry to perform variety of washes process located at Manesar. Goods are shipped only after final inspection from the Quality Assurance Department. Client ensures each component of the garment goes through a supervised channel. Shipping to over 34 destinations is routine therefore client cut, bundle, and issue every component according to the Customer Order.

To control sewing quality and efficiency, Client work on the assembly line system and regular supervision is implemented to check each garment before it comes to final inspection. Client operates a dedicated computer embroidery unit with the best machines and has taken surface embellishments of the garment to a new dimension

Products

Client deals in following types of products' category as follows:

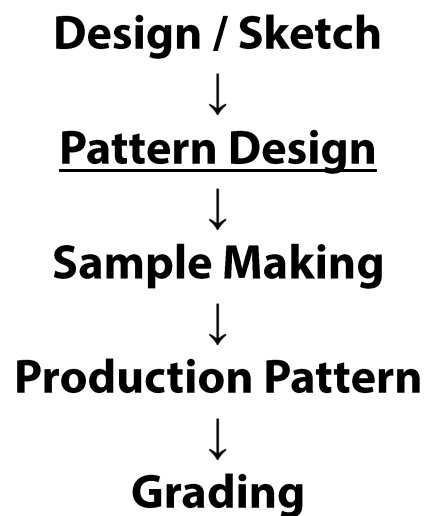
- ✓ **Denim Shirt – Boys / Girls / Infant / Style / Color / Size.**
- ✓ **Denim Pant Boys / Girls / Infant / Style / Color / Size.**
- ✓ **Denim dress / Product as per Customer specification**
- ✓ **Much more...**

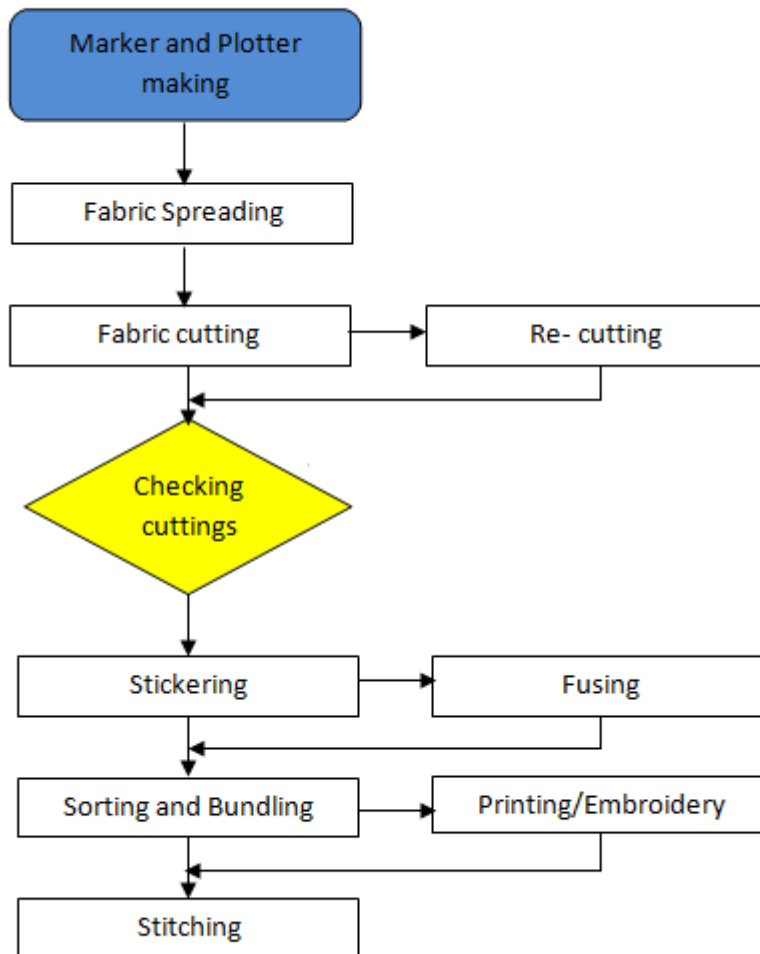
Production Process

Client has Hi-tech production plant located in Gurgaon & Manesar (heart of Haryana). Unit is endowed with the latest machines and equipment, which operate on the cutting edge technologies. Client does the manufacturing process by their own machines and maximum manufacturing processes are in-house and job work does as and when required on minimum basis. Line and production processes are as follows:

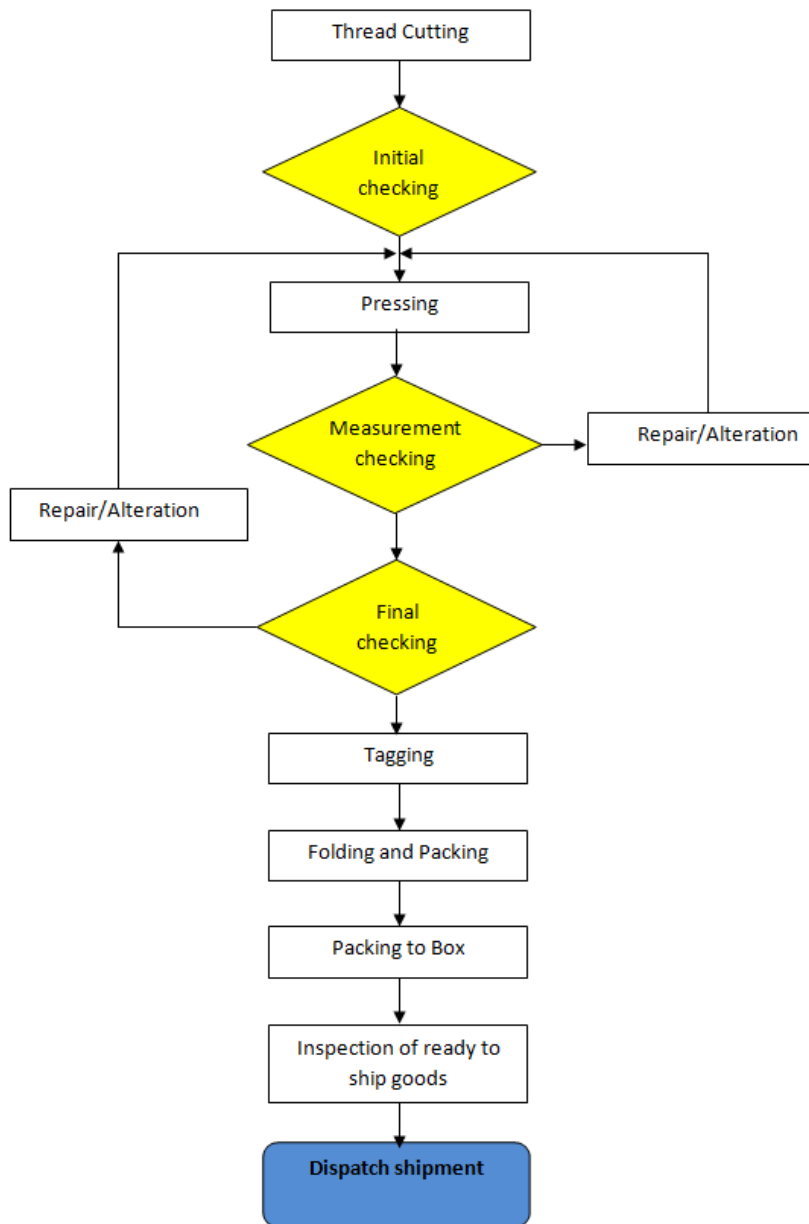
Production Stages

Bulk Cutting → Stitching → Buttoning → Washing → Finishing → Packing





Garment Finishing Process Flow Chart





Customer Success Story

We evaluated the top garment manufacturing ERP software products and found Eazy ERP is the best fit and Value-for-money. Eazy ERP enables us to track our production with pinpoint accuracy and dramatically reduce risks. Eazy ERP is so easy to manage; we are able to do this without the expense of hiring additional IT and other resources.

Eazy Business Solutions (EBS) developed export module as per our requirement and integrate with existing modules of Eazy ERP i.e. Production, Purchase, Sale, Store, Quality, Payroll and Tally Integration.

Now, we have visible stock. Whereas before people of Chelsea had to go around counting material and we'd get an update perhaps once a day, now the system updates in real time. Eazy ERP allows disparate groups of staff members to work together and have the same visibility. .

2 Challenge before Eazy ERP Implementation

The major challenges faced in Chelsea prior to the implementation of Eazy Apparel ERP:

- **Lack of an integrated solution:** The complex apparel manufacturing process requires close coordination between all the departments and hence a fully integrated solution was required as the purpose was not being served with the use of separate standalone modules.
- **Lack of a single information center for all the departments:** Duplication of work as a result of standalone modules took a lot of time ultimately affecting quick decision making and hence a single common information center for all the departments was the need of the hour.
- **Production planning for multiple production units:** To plan the production activities for 2 production units in different geographical locations and thereafter keeping a track of each activity was indeed a daunting task.
- **Inventory Management:** Keeping a close watch over the inflow and outflow of inventory across different units along with order based inventory reconciliation was another major challenge



- **Real time inputs from EXIM Management:** As standalone EXIM module was used, real time updates of receivables and payables had posed a major challenge.
- **Ensuring data security:** As traditional financial and other standalone modules were used in Chelsea, there was no user log control and ensuring effective audit control system was a bigger challenge.

Users were maintaining manual process for remaining following activities / processes:

- Procurement process
- Inspection Process
- Production Planning
- Customer Order & Dispatch process
- Asset Process

Also, client prepares the reports in Excel Sheet.

Pain areas

1. Integration required between various business processes. Single platform required for each business process.
2. Tally software does not provide complete solution from procurement to Dispatch.
3. Lack of functionality in existing legacy system:
 - 3.1. PO pendency
 - 3.2. PO Amendment
 - 3.3. Delivery Schedule of Vendor
 - 3.4. Delivery Schedule of Customer
4. Manual – Purchase process, Quality Process, Production process, Sales Order & dispatch process and Job Work process.

5. Material Planning is a critical area.
6. Wastage & Consumption of Material during production process.
7. MIS Reports prepared manually.

3 Solution

Client bought the following modules in Eazy ERP for manufacturing & head office location:

Modules

- ✓ **Sale**
- ✓ **Purchase**
- ✓ **Store**
- ✓ **Tally Integration**
- ✓ **Production with WIP**
- ✓ **Quality**
- ✓ **Material Requirement Planning-1**
- ✓ **Job Work – O/S & I/S**
- ✓ **Fixed Asset**
- ✓ **Export**

4. Result

- ✓ Easy business model modifications to support growth
- ✓ Ability to expand rapidly and quickly seize opportunities
- ✓ No more customization
- ✓ Provides real time reliable data
- ✓ Improves inventory management
- ✓ Increases customer satisfaction
- ✓ Facilitates Columnar Reporting

Pain Area Resolved by Eazy ERP

These are the different ways in which Eazy ERP has helped Chelsea to address the above mentioned challenges:

- Eazy ERP is built in Production and advance quality modules which have helped Chelsea in integrating the various manufacturing processes carried on in different geographical locations ultimately resulting in real time updates.
- Through its various user friendly features, Eazy ERP has helped merchandisers to manage their respective buyer orders in a more professional way as well as to effectively coordinate and follow – up between different departments internally thereby ensuring in time decision making and on time deliveries.
- It has also helped them to manage their raw material processing including item cost adjustments resulting from shrinkage / damages / short receipts.
- Eazy ERP has greatly helped Chelsea in planning their production activities.



- The Material Requirement Planning module not only gives an idea about the raw material stock required for produce SFG / FG material.
- Eazy ERP facilitates the users to track the production status not only based on the product but also based on different batches, factories and processes involved.
- It not only facilitates conversion of raw materials into finished products but also takes care of raw material consumption based on daily production.
- As Eazy ERP is multi-currency compatible and fully integrated with Sales, Purchase and EXIM, it has served them as a single point reference to all the departments and provides better audit controls.
- Through pre-defined user access rights, Eazy ERP provides better data security.
 - EBS developed Export Module as per Chelsea's requirement:
 - ✓ LC Process
 - ✓ Export Documentation
 - ✓ Advance License detail
 - ✓ Duty Drawback
 - ✓ Operation wise per piece rate calculation
 - ✓ Production Entry – Operation wise- Line – Employee wise
 - ✓ Focus License
 - ✓ Status House Export Incentive
 - ✓ Incremental Export Certificate

- ✓ Buyers Credit
- ✓ Payment Due Date from Customer & Actual Payment
- ✓ Forward booking of foreign currency
- ✓ Forward Cargo Receipt
- ✓ Interest Rate Subvention

Thus, Eazy ERP – the Smart Garment ERP with its industry specific features has successfully addressed the core challenges of Chelsea and helped them in achieving maximum capacity utilization, clearing production bottlenecks and improving the overall productivity.

Eazy ERP is a one stop solution which provides us real time information of all core activities right from order confirmation to shipment.

Generate Reports from Eazy & Tally Software

It is possible to generate reports on item wise pending orders for manufacture and pending orders for delivery to customers using the Columnar Reporting tool in Eazy ERP, which can dynamically extract data from the database to generate reports in the required format.

5. Reports

- Sales Reports
 - Size Wise
 - Color Wise
 - Gender wise
 - Style wise
 - City Wise



- SO No wise
- Country wise
- Item type (FIT / NORMAL)
- Item Sub Type (Half Sleeve / Full Sleeve / Sleeve Less)
- Design wise
- Purchase Order (PO) Register
- PO Status – Open / Closed / All
- Item / Vendor / PO number wise
 - Vendor Performance
 - Pending Indent Register
 - Purchase Register
 - Purchase Return Register
 - Purchase Indent Vs PO
 - Debit / Credit Note Register
 - PO Vs Inward Register
 - Stock Ledger -
 - Store / Item Group / Item
 - Daily Purchase / Inward
 - Inward Challan Register
 - PO Vs MRN
 - Quality Inspection Report
 - Inward Rejection Report
 - Stock Adjustment Report

- Material Outstanding against RGP
 - Material Statement (without PO)
 - Physical stock Vs Actual Stock
 - Stock Transfer Register
 - NRGP Register
 - Stock Ledger - Quantitative
 - Stock Statement - Quantitative
 - Sales Order (SO) Register
 - SO Status – Open / Closed / All
- Item/Customer/SO number wise
- Sales Trend – Item / Customer
 - Sales Register
 - Sales Return Register
 - SO Vs Dispatch Report
 - Schedule Vs Dispatch
- Store / Item Group / Item
- Daily Sales / Outward
 - Material Consumption Reports
 - Material Rejection Report
 - Much more....